



*We Know Digital Printing Better*



# **POSITION PRINT MACHINE**

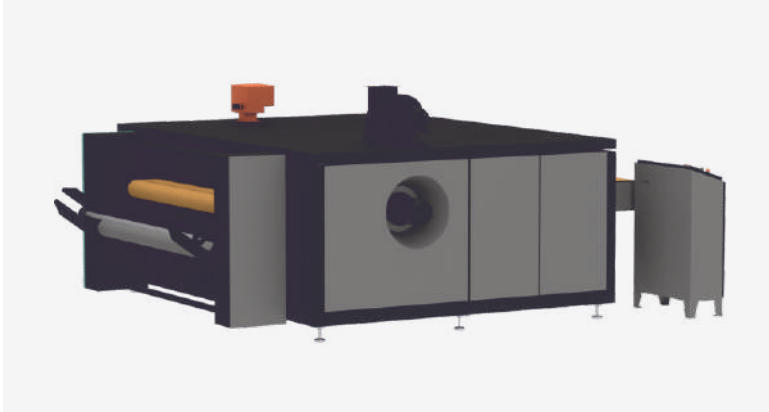
[www.pantoneindia.co.in](http://www.pantoneindia.co.in)

# Industrial Position Print Machine

# Industrial High-Speed Position Printing Machine







## Dryer



## Tension & Centeric Device



## PRODUCT FEATURES

-  Up to 16 Heads
-  Easy Loading
-  Fast Response
-  600 x 1200 dpi
-  Quality
-  Personalized
-  Up to 1900mm
-  Eco-Friendly
-  Intelligence
-  Flexibility
-  High Speed

## SPECIFICATIONS

<b>Model</b>	<b>PRINTEX-POS-16</b>
<b>Printhead Type</b>	Kyocera KJ4B (Katana Series)
<b>Printhead Quantity</b>	16 Pcs
<b>Resolution</b>	600 x 1200 (2 Pass)
<b>Poductivity</b>	~ 90 lm/h (2 Pass)
<b>Ink Type</b>	Reactive Ink
<b>Ink Colour</b>	Cyan, Magenta, Yellow, Black, Orange, Red, Blue, Grey
<b>Ink Supply Method</b>	Peristaltic Pump Ink Supply, Auto Degassing and Negative Pressure System
<b>Cleaning Method</b>	Horizontally and Vertically movable Soft brush With Two Sponge Roll
<b>Substrate</b>	Cotton & Viscose Fabric With Embroidery, Jacquard and Schiffli Work etc
<b>Camera Resolution</b>	4096 * 2
<b>Deviation</b>	< 0.3 mm
<b>Compressed Air Supply</b>	> 0.6 MPA   0.15m3/Hr (Dry Without Oil and Water)
<b>Compressed Water Supply</b>	> 1 MPA
<b>Printer size</b>	4656 mm * 2304 mm * 2277 mm (L*W*H)
<b>Dryer size</b>	2190 mm * 2850 mm * 1780 mm (L*W*H)

## POWER SUPPLY

<b>Printer</b>	AC 380 V Three Phase   38 A (6.5 KW) + 27 A (6 KW)
<b>External Dryer (Electrical)</b>	480 Volt   3 Phase (16KW-22A)
<b>External Dryer (Gas)</b>	220 Volts   1 Phase (6 KW-8HP) + Gas

## TENSION & CENTRIC DEVICE SPECIFICATIONS

<b>Power Supply</b>	220 Volt   1 Phase (2 KW )
<b>Alignment Accuracy</b>	+2 MM
<b>Usable Width</b>	1850 MM
<b>Max Speed</b>	20 M/min



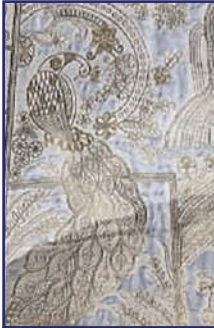
**10,000**  
Click Per Second

Accuracy <0.2mm

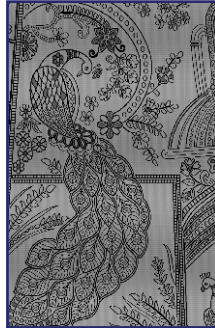


*Single Camera That  
Continue Monitor The  
Fabric Deform And Adjust  
Design Accordingly*

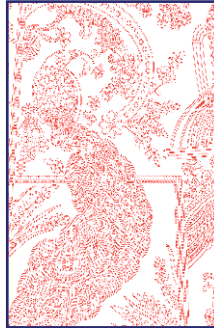
## Position Print Machine Process



Take Jaquard,  
Embroidered  
& Schiffli Fabric



Scan The  
Fabric



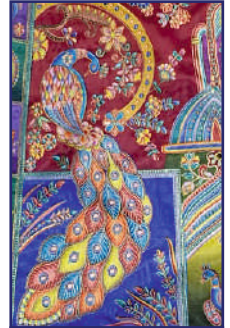
Create Red  
File In Software  
In 5 Minuts



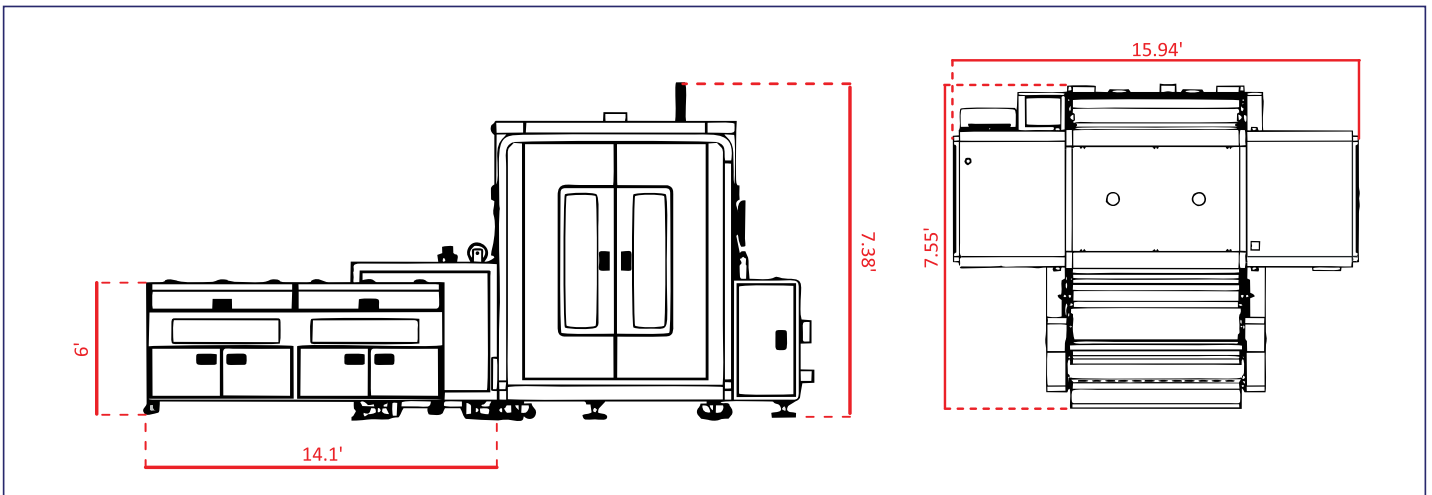
Make Auto  
Control or  
Manual Point  
By Software



Make Design By  
Scan Image



Check The Local  
Degub & Print On  
Fabric



Scan  
To Explore Us



Phone

+91 90991 21384, +91 95101 08345

Mail

info@pantoneindia.in

Website

www.pantoneindia.co.in

Location

Plot No. 50, Soma Kanji Ni Wadi,  
Near Savera Complex, Khatodra Wadi, BRTS  
Canal Road, Surat-395002 (Gujarat) India